

PART OF S.W. 1/4 OF SEC. 24, T.5N., R.1W., S.L.B. & M.
EASTWOOD SUBDIVISION NO. 6

134

LOTS 84-91

IN WEBER COUNTY

TAXING UNIT: 159

SCALE 1"=50'

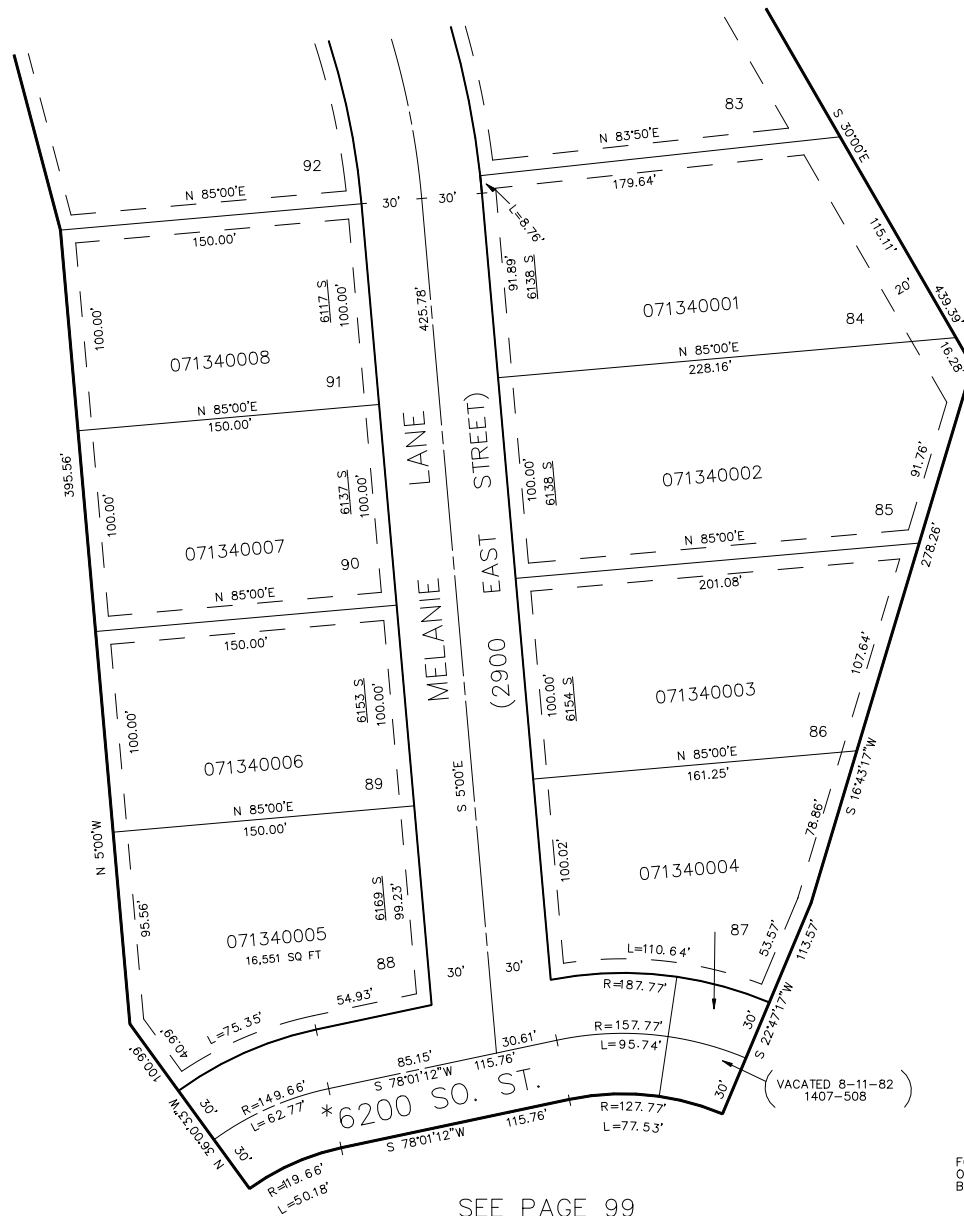
SEE PAGE 133

SEE PAGE 160

SEE PAGE 99

*NAME CHANGED
 7-7-75
 ORD. #8-75
 (1091-318)

7' UTILITY & DRAINAGE EASEMENTS
 EACH SIDE OF PROPERTY LINE
 AS INDICATED BY DASHED LINES,
 EXCEPT AS OTHERWISE SHOWN.



SEE PAGE 99

FOR COMPLETE ENG. DATA SEE
 ORIGINAL DEDICATION PLAT IN
 BOOK 16, PAGE 72, OF RECORDS.